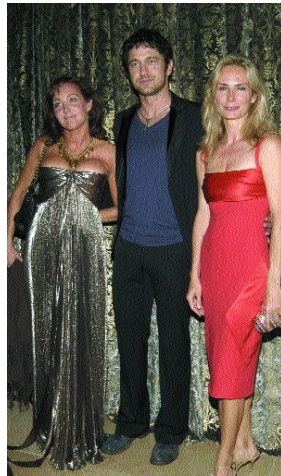
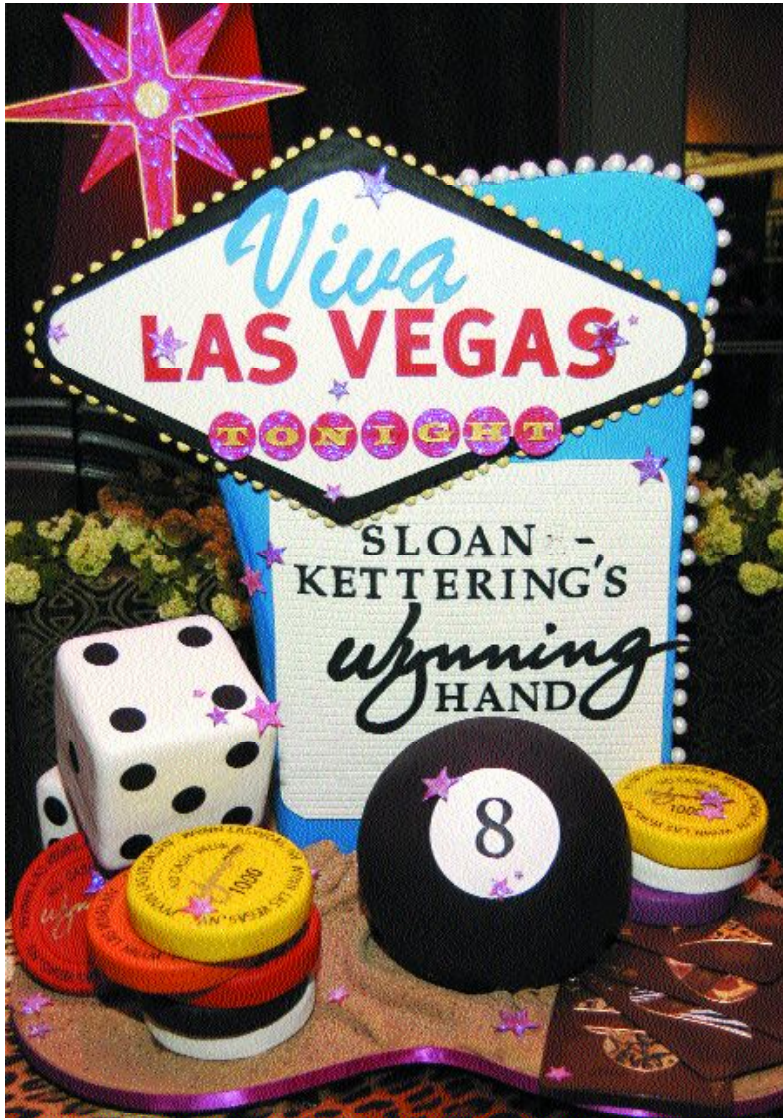


# The Society of Memorial Sloan-Kettering Cancer Center's

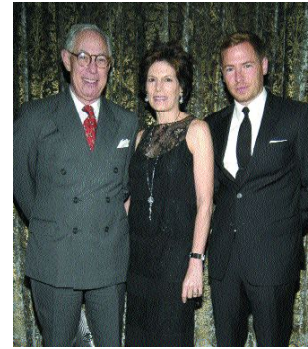
Photos by: © Patrick McMullan  
Photo: Scott Rudd PMc

## A Wynning Hand

An Evening of Glamour and Gaming



Camilla Olsen, Gerard Butler, Valesca Guerrand Hermes



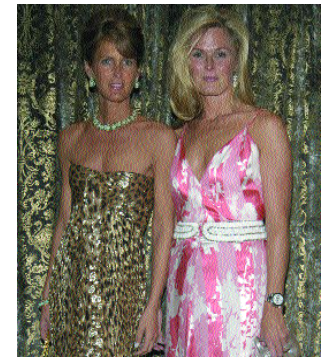
Arie and Coco and Will Kopelman



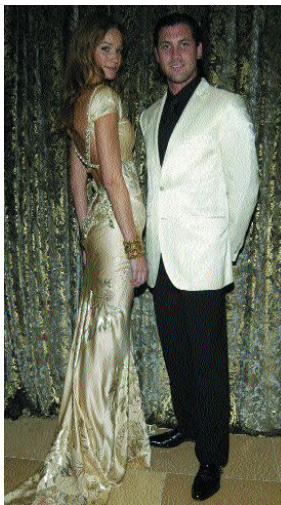
Alexandra Lind Rose



Anne Grauso



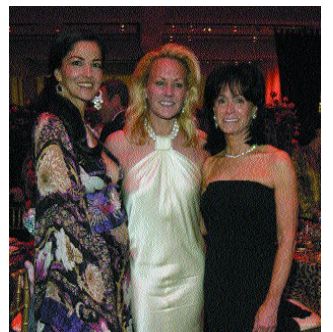
Christine Ittleson Smith and CiCi Dobi



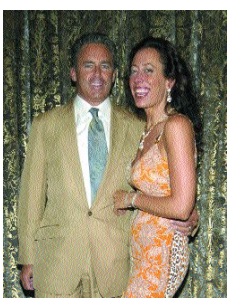
Ines Rivero and Max Chmerkovskiy



Beyonce Knowles



Dayssi Olarte de Kanavos, Muffie Potter Aston and Wendy Carduner



Campion and Tatiana Platt



Pamela Fielder



Roberto Cavalli, Elaine and Steve Wynn, Melania Trump, Eva Cavalli and Donald Trump



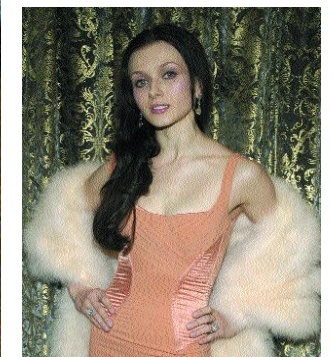
Heidi Klum



Alexis Waller and Melanie Seymour Hermes



Tinsley Mortimer



Irena Dvorovenko

The Associates Committee of The Society of Memorial Sloan-Kettering Cancer research Center hosted their annual gambling party dubbed "A Wynnning Hand." The evening was sponsored by Roberto Cavalli and Wynn Las Vegas, at Sotheby's. It was an evening of glamour and gaming that raised over \$400,000 to benefit The Cancer Center's Department of Pediatrics.

The Society, which celebrates its 60th anniversary this year, is a volunteer organization dedicated to promoting the well-being of patients, supporting cancer research and providing public education on the prevention, early detection and treatment of cancer at Memorial Sloan-Kettering Cancer Center, the world's largest private institution devoted exclusively to cancer. The Associates Committee was founded in 1984 to introduce a younger generation to the philanthropic and volunteer activities of The Society. For more information please log onto: [www.mskcc.org](http://www.mskcc.org)

